

Mapping of Urban Tanks / Rivers and Changes Bheemili Urban Local Body, Vishakhapatnam District, Andhra Pradesh



Source:

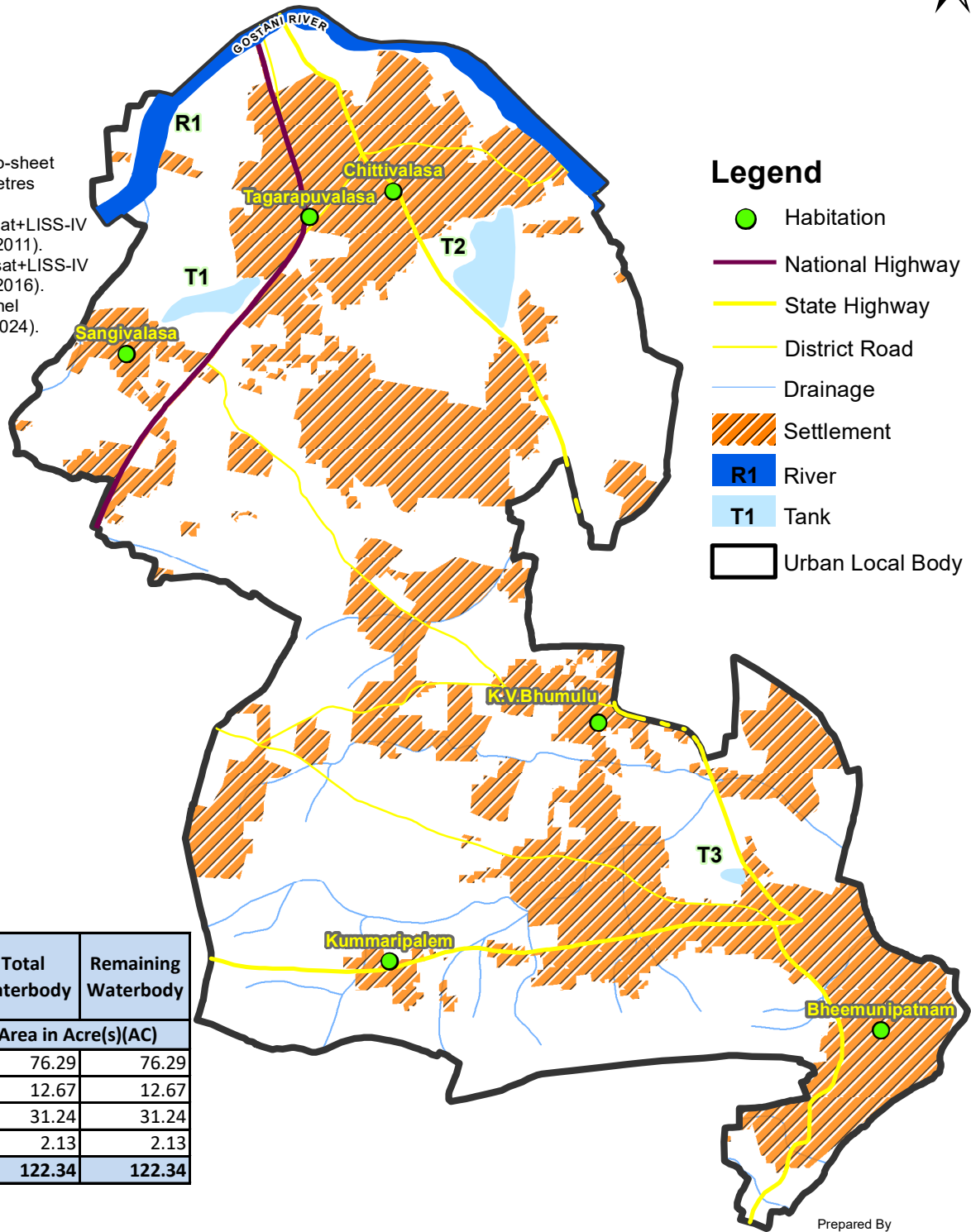
1. Urban Local Body Boundary provided by the Commissioner and Director of Municipal Administration, GoAP.

Data used:

2. Tank / Lake / River / Reservoir / Drainage / Canal boundary digitized based on SoI Topo-sheet and Cartosat+LISS-IV Satellite Data (2.5 metres resolution) year 2011.
3. Changes of 2011 digitized based on Cartosat+LISS-IV Satellite Data (2.5 metres resolution - year 2011).
4. Changes of 2016 digitized based on Cartosat+LISS-IV Satellite Data (2.5 metres resolution - year 2016).
5. Changes of 2024 digitized based on Sentinel Satellite Data (10 metres resolution - April 2024).

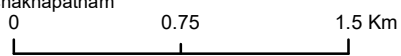
Legend

- Habitation
- National Highway
- State Highway
- District Road
- Drainage
- Settlement
- R1 River
- T1 Tank
- Urban Local Body



S.No	Waterbody Name (Refer Map)	Water Body Local Name	Total Waterbody	Remaining Waterbody
			Area in Acre(s)(AC)	
1	River(1)	Gostani River	76.29	76.29
2	Tank (1)	Sangivalasa	12.67	12.67
3	Tank (2)	Chittivalasa	31.24	31.24
4	Tank (3)	Bhimunipatnam	2.13	2.13
Grand Total			122.34	122.34

Note: This map and contents are required to be ground-truthed and vetted by the Collector and District Magistrate, Vishakhapatnam District and the Stakeholder Departments.



Prepared By



Andhra Pradesh Space Applications Centre
ITE& C Department, Govt., of A.P.
Vijayawada - 520010